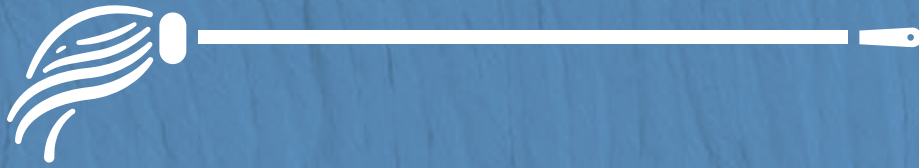


# Carolina

MOP COMPANY





MANUFACTURING EXCELLENCE  
SINCE 1945

PRODUCT CATALOG



[carolinamop.com](http://carolinamop.com)

819 Whitehall Rd. Anderson, SC 29625 | (864) 225-8351 |   @carolinamopinc



MANUFACTURING EXCELLENCE  
SINCE 1945

Carolina Mop was established in the Upstate of South Carolina in 1945. We have been manufacturing floor cleaning products for over 70 years! We are a family-owned manufacturer and treat our customers, large or small, with the personal attention they deserve.

Since 1945, our commercial cleaning products have come with a customer satisfaction guarantee. Our raw materials and finished products are sourced through vendors that meet our high quality standards. Our internal quality control process guarantees that no product is sold without our utmost confidence in its performance.

For over 70 years our goal has remained the same; to provide exceptional value to our customers. Through our long-standing relationships with suppliers and the volume of products we produce, we are able to maximize efficiencies we have created in our logistics, labor, automation and economies of scale. These are passed along to our customers in the form of competitive pricing.

While we manufacture a variety of mops (dust mops, wet mops, deck mops, etc.), we also sell other commercial floor cleaning tools such as brooms, handles, scrub brushes, janitor carts, etc.

Carolina Mop, Inc. is committed to providing you with the highest quality products and exceptional service. Four generations later we are still committed to the same core values Carolina Mop was founded on -- dedication to quality, fair pricing, & excellent service.

Please enjoy our catalog and reach out to us with any questions or pricing requests.

Phone: 864-225-8351

Toll Free: 800-845-9725

Fax: 864-225-1917

[customerservice@carolinamop.com](mailto:customerservice@carolinamop.com)

[carolinamop.com](http://carolinamop.com)

819 Whitehall Rd. Anderson, SC 29625 | (864) 225-8351 | [f](https://www.facebook.com/carolinamopinc) [@carolinamopinc](https://www.instagram.com/carolinamopinc)

## TABLE OF CONTENTS

### Mops

Conventional Cut-End Mops .....	1-2
Cut-End Screw Connector Mops .....	3
Looped-End Mops .....	4-6
Carolina Mop's SizeWize™ .....	7
Carolina Mop's BlockMop™ .....	8
Carolina V-STRIP™ Mop.....	9
Greentex™ Products.....	10

### Microfiber Products

Microfiber Pads .....	11
Microfiber Mops .....	12
Miscellaneous Microfiber Products .....	13

### Dust Mops

Launderable Dust Mop Head .....	14
Disposable Dust Mop Heads & Hardware .....	15
Electrostatic Dust Mop Heads .....	16

### Specialty Products

Deck Mops, Sponge Mops, Wedge Mops .....	17
--	----

Mop Handles .....	18-20
-------------------	-------

Brooms .....	21
--------------	----

### Brushes

Floor Brushes .....	22
Utility/ Pot Scrubbers, Deck, Counter Brushes .....	23
Hand, Bowl, Miscellaneous Brushes.....	24

Color Coded Items .....	25-26
-------------------------	-------

Bonnets .....	27
---------------	----

Miscellaneous Products/Tools .....	28-29
(ex. Mop Buckets, Dust Pans, Etc.)	

Pads .....	30-32
------------	-------

Squeegees .....	32-33
-----------------	-------

# CHOOSING THE RIGHT MOP FOR THE JOB

- BLENDS** Raycot & rayon synthetics have been designed to offer the best properties of each fiber combined in a single yarn. Rayon usually presents the basis for initial absorbency. Synthetic fibers are added for strength, and cotton fibers produce texture and long term floor drying ability. Blends differ by the grade of cotton used and by the proportionate use of each type of fiber.
- PLIES** A mop strand is constructed by twisting single slivers of yarn together called plies. A 4-ply yarn is composed of 4 separate sub-strands of fiber. Untwist a strand of yarn from the end for a clear illustration of the ply number. Within a given grade of yarn, the greater the number of plies, the stronger the mop will be. This means less breakage and more strength to handle tough jobs involving caustic chemicals and rough floor surfaces. 4 and 8-ply yarns are the most common in the industry.
- TWIST** Expressed in lineal turns per inch, twist is the torque applied to fibers during the spinning process. A loosely twisted yarn will provide high absorption and a short break in time. However, when strands lose their twist, it causes unraveling and shedding of fiber, called lint. This problem can be minimized by opting for fantail or looped-end construction. More tightly twisted yarn can aid in minimizing lint and unraveling, while providing strength for tough jobs.
- PRIDE COTTON** A 4-ply cotton yarn with a loose twist, which allows for maximum absorption and retention after break-in. This is best for general cleaning and is budget friendly.
- BRUTE COTTON** An 8-ply yarn with a tighter twist that lives up to its name. It can be used on porous floors. It can be used for cleaning and stripping, or for general mopping when durability is a concern.
- JAN/CAL COTTON** A fine 8-ply cotton string yarn. It has a tight twist, which lends to its durability for rough and tough jobs. It works well on abrasive surfaces and is even used as a finishing mop in some cases because of its low lint factor.
- V-STRIP** A blend of viscose and cellulose. Highly absorbent with little to no lint makes this ideal for healthcare facilities.
- DUTY RAYON** A 4-ply rayon yarn which is very absorbent. It provides durability because of its long staple fiber content. This is a clean yarn that lints less, dries fast, and resists mildew. It is often used as a finishing mop because of these qualities.
- QUICKSORB** An 8-ply rayon which offers extra strength and durability for tougher jobs and abrasive surfaces.
- BLUE/WHITE STRIPED** Yarn consists of a blend of rayon and polyester which has 3 plies of white and one ply of blue blended together in a candy striped look. Virtually lint-free, it gives a smooth, controlled release for floor finish.
- RAYCOT** A high performance yarn which offers quick absorbency without breaking and high moisture retention. The strength of the yarn resists abrasive surfaces and chemicals, and is suitable for environments such as the health care industry, where intensive laundering is required. Also ideal for all-purpose cleaning.
- RAYON/SYNTHETIC BLENDED YARN** Has a long fiber content which provides for low linting and superior tensile strength. It is excellent for applying disinfectants and germicides, or for all purpose cleaning. It is most commonly used in the food and healthcare industries. Other characteristics include fast drying time and resistance to mold and mildew.
- NYLON/SMOOTHIE** 100% lint free. Yarn is designed to absorb little, allowing the floor finish to be spread evenly.

## ANATOMY OF THE MOP



### HEADBAND

Available in multiple sizes and materials. This choice will drive handle selection.

### YARN

A wide variety of yarn types exist for different applications.

### TAIL BAND

Tailbands help to prevent tangling and increase floor coverage. Not found on all mops.

### END

Can be looped or cut-end. Looped ends help to reduce fraying.

# MOP OPTIONS

## HEADBANDS

### NARROW BANDS

Narrow Bands are 1 - 1/4" wide and come in two different materials:

1. Polyester Twill is available either plain or with imprinted sizes
2. Mesh is available in a variety of colors that can be used for color coding & identification

### WIDE BANDS

Wide Bands are 5" width and come in two options:

1. Standard Mesh
2. Vinyl Coated Mesh

*NOTE: Mesh Bands come in Red, Green, Yellow, Orange, Blue, and White. They provide an economical way of color-coding. Mesh Bands also promote fast drying time to help prevent mildew and can be used as a scrubber for stubborn spots.*

## MAINTAINING YOUR MOPS

The process and care of laundering mops can increase longevity and performance. For best results, we suggest the following:

### WASHING

1. Use a water temperature no higher than 150° F.
2. Wash mops together, without the addition of any other types of laundry.
3. Do not overload machine, so that there may be free flow of water through the mops.
4. When using an agitator type washer, use a low agitation setting.
5. For best laundering result, place mops in a mesh net laundry bag.
6. Use of bleaches is not recommended. However, if bleach must be used, ad sparingly with cool water.
7. Use of high ph detergents is not recommended.
8. Contact your chemical supplier for suggested dilution ratios. The strength and choice of the chemicals used can affect the performance and longevity of the mop.

### DRYING

1. Air-drying is preferred over machine drying.
2. If machine drying is chosen, do not exceed 150° F.
3. Hang damp mops in well ventilated area to prevent mold and mildew.
4. Before mops are returned to active use, allow time for mop to absorb treatment.

*Caution: Shrinkage or deterioration may occur if laundering instructions are not followed.*



# CONVENTIONAL CUT-END MOPS

## OUNCE SERIES

The Cut-End Mop is the standard and most popular style of mop. It offers low initial cost, but is not usually launderable, which limits its use in some cases. The addition of a tail-band along with the use of a laundry net may aid in light laundering.

*NOTE: See Fan Style example with tail-band at the top of page 2.*



### CUT-END NARROW BAND

Description	8 oz.	10 oz.	12 oz.	16 oz.	20 oz.	24 oz.	32 oz.
	Stock #	Stock #	Stock #	Stock #	Stock #	Stock #	Stock #
<b>Pride Cotton 4-Ply</b>	1011	1012	1013	1014	1015	1016	1017
<b>Brute Cotton 8-Ply</b>	1041	1042	1043	1044	1045	1046	1047
<b>Duty Rayon 4-Ply</b>	1061	1062	1063	1064	1065	1066	1067
<b>Quicksorb Rayon 8-Ply</b>	1071	1072	1073	1074	1075	1076	1077
<b>Cal/Jan Cotton 8-Ply</b>	1081	1082	1083	1084	1085	1086	1087
<b>Raycot Natural 4-Ply</b>	1091	1092	1093	1094	1095	1096	1097
<b>Raycot Colored 4-Ply</b>	1101	1102	1103	1104	1105	1106	1107
Shipping Weight/Dz.	6 lbs.	8 lbs.	9 lbs.	12 lbs.	15 lbs.	18 lbs.	24 lbs.

### CUT-END WIDE BAND



Description	8 oz.	10 oz.	12 oz.	16 oz.	20 oz.	24 oz.	32 oz.
	Stock #	Stock #	Stock #	Stock #	Stock #	Stock #	Stock #
<b>Pride Cotton 4-Ply</b>	2011	2012	2013	2014	2015	2016	2017
<b>Brute Cotton 8-Ply</b>	2041	2042	2043	2044	2045	2046	2047
<b>Duty Rayon 4-Ply</b>	2061	2062	2063	2064	2065	2066	2067
<b>Quicksorb Rayon 8-Ply</b>	2071	2072	2073	2074	2075	2076	2077
<b>Cal/Jan Cotton 8-Ply</b>	2081	2082	2083	2084	2085	2086	2087
<b>Raycot Natural 4-Ply</b>	2091	2092	2093	2094	2095	2096	2097
<b>Raycot Colored 4-Ply</b>	2101	2102	2103	2104	2105	2106	2107
Shipping Weight/Dz.	6 lbs.	8 lbs.	9 lbs.	12 lbs.	15 lbs.	18 lbs.	24 lbs.

*For Colored Raycot: Add O - Orange, B - Blue, G - Green, R - Red to the end of the stock number.*

# CONVENTIONAL CUT-END MOPS

## NUMBERED SERIES



### CUT-END NARROW BAND

Description	# 8	# 10	# 12	# 16	# 20	# 24	# 32
	Stock #	Stock #	Stock #	Stock #	Stock #	Stock #	Stock #
Pride Cotton 4-Ply	3011	3012	3013	3014	3015	3016	3017
Brute Cotton 8-Ply	3041	3042	3043	3044	3045	3046	3047
Duty Rayon 4-Ply	3061	3062	3063	3064	3065	3066	3067
Quicksorb Rayon 8-Ply	3071	3072	3073	3074	3075	3076	3077
Cal/Jan Cotton 8-Ply	3081	3082	3083	3084	3085	3086	3087
Raycot Natural 4-Ply	3091	3092	3093	3094	3095	3096	3097
Raycot Colored 4-Ply	3101	3102	3103	3104	3105	3106	3107
Shipping Weight/Dz.	5 lbs.	6 lbs.	7 lbs.	10 lbs.	13 lbs.	16 lbs.	20 lbs.

Numbered Series Cut-Ends weigh less than the ounce series. Our number series standard weight is 75% of the number stated (for example, a # 32 mop weighs 24 oz.).

### CUT-END WIDE BAND

Description	# 8	# 10	# 12	# 16	# 20	# 24	# 32
	Stock #	Stock #	Stock #	Stock #	Stock #	Stock #	Stock #
Pride Cotton 4-Ply	4011	4012	4013	4014	4015	4016	4017
Brute Cotton 8-Ply	4041	4042	4043	4044	4045	4046	4047
Duty Rayon 4-Ply	4061	4062	4063	4064	4065	4066	4067
Quicksorb Rayon 8-Ply	4071	4072	4073	4074	4075	4076	4077
Cal/Jan Cotton 8-Ply	4081	4082	4083	4084	4085	4086	4087
Raycot Natural 4-Ply	4091	4092	4093	4094	4095	4096	4097
Raycot Colored 4-Ply	4101	4102	4103	4104	4105	4106	4107
Shipping Weight/Dz.	5 lbs.	6 lbs.	7 lbs.	10 lbs.	13 lbs.	16 lbs.	20 lbs.

#### Optional Construction for Cut-End

A tail-band, also commonly referred to as fan style or web foot, can be added to cut-end mops.

Add "1" to the end of the stock number when ordering.

See blue mop at top of page for optional tail-band.

*All mop heads are furnished in an individual polybag and packed 1 dozen per case.*



## CUT-END SCREW CONNECTORS

These mops are constructed to make mop loading quick and simple without touching a dirty mop. A screw is placed through the headband and a metal band securely locks the yarn in place. An economical, easy to change screw connector handle is required (part # 7070 & 7090 – located on page 18.)

Screw Connectors are designed to lay flat on the floor and cover a larger surface area. All Screw Connectors have a narrow band which is double stitched for strength.

Description	12 oz.	16 oz.	20 oz.	24 oz.	32 oz.
Ounce Series	Stock #	Stock #	Stock #	Stock #	Stock #
<b>Pride Cotton 4-Ply</b>	5013	5014	5015	5016	5017
<b>Brute Cotton 8-Ply</b>	5043	5044	5045	5046	5047
<b>Duty Rayon 4-Ply</b>	5063	5064	5065	5066	5067
<b>Quicksorb Rayon 8-Ply</b>	5073	5074	5075	5076	5077
<b>Raycot Natural 4-Ply</b>	5093	5094	5095	5096	5097
<b>Raycot Colored 4-Ply</b>	5103	5104	5105	5106	5107
Shipping Weight/Dz.	9 lbs.	12 lbs.	15 lbs.	18 lbs.	24 lbs.

Description	# 12	# 16	# 20	# 24	# 32
Number Series	Stock #	Stock #	Stock #	Stock #	Stock #
<b>Pride Cotton 4-Ply</b>	6013	6014	6015	6016	6017
<b>Brute Cotton 8-Ply</b>	6043	6044	6045	6046	6047
<b>Duty Rayon 4-Ply</b>	6063	6064	6065	6066	6067
<b>Quicksorb Rayon 8-Ply</b>	6073	6074	6075	6076	6077
<b>Raycot Natural 4-Ply</b>	6093	6094	6095	6096	6097
<b>Raycot Colored 4-Ply</b>	6103	6104	6105	6106	6107
Shipping Weight/Dz.	7 lbs.	10 lbs.	13 lbs.	16 lbs.	20 lbs.



## PLASTIC LAY FLAT & TWIST ON

Description	16 oz.	20 oz.	24 oz.	32 oz.
	Stock #	Stock #	Stock #	Stock #
<b>Lay Flat Cotton Blend</b>	6814	6815	6816	6817
<b>Lay Flat Rayon</b>	6864	6865	6866	6867
<b>Twist On Cotton Blend</b>	6514	6515	6516	6517
<b>Twist On Rayon</b>	6564	6565	6566	6567
Shipping Weight/Dz.	12 lbs.	15 lbs.	18 lbs.	24 lbs.



# LOOPED-END MOPS

## PREMIUM & ANTIMICROBIAL SERIES

### PREMIUM SERIES

A premium blend of synthetic fibers makes this mop ideal for healthcare applications. Our premium series stands up to tough use and repeated laundering. Available in blue, green, orange, and yellow.

Add B-Blue, G-Green, O-Orange, Y-Yellow to the end of the stock number.

#### 4-PLY PREMIUM COLORED

Description	Small	Medium	Large	X-Large
	Stock #	Stock #	Stock #	Stock #
<b>Narrow Band</b>	1223	1224	1226	1227
<b>Wide Band</b>	2223	2224	2226	2227
Shipping Weight/Dz.	10 lbs.	13 lbs.	18 lbs.	23 lbs.



#### 4-PLY PREMIUM NATURAL

Description	Small	Medium	Large	X-Large
	Stock #	Stock #	Stock #	Stock #
<b>Narrow Band</b>	1253	1254	1256	1257
<b>Wide Band</b>	2253	2254	2256	2257
Shipping Weight/Dz.	10 lbs.	13 lbs.	18 lbs.	23 lbs.



### ANTIMICROBIAL SERIES

A premium blend yarn with an antimicrobial addition. The additive protects the mophead from deterioration by eliminating germs, bacteria, mold, and yeast. Available in blue, green, orange, and yellow.

Add B-Blue, G-Green, O-Orange, Y-Yellow to the end of the stock number.

#### 4-PLY ANTIMICROBIAL COLORED

Description	Small	Medium	Large	X-Large
	Stock #	Stock #	Stock #	Stock #
<b>Narrow Band</b>	1703	1704	1706	1707
<b>Wide Band</b>	2703	2704	2706	2707
Shipping Weight/Dz.	10 lbs.	13 lbs.	18 lbs.	23 lbs.



#### 4-PLY ANTIMICROBIAL NATURAL

Description	Small	Medium	Large	X-Large
	Stock #	Stock #	Stock #	Stock #
<b>Narrow Band</b>	1603	1604	1606	1607
<b>Wide Band</b>	2603	2604	2606	2607
Shipping Weight/Dz.	10 lbs.	13 lbs.	18 lbs.	23 lbs.



## LOOPED-END MOP

The Looped-End Mop is designed for durability and superior performance. A strand is looped back and forth with a headband holding the yarn securely in place. Looped-end Mops clean 2 to 3 times the surface area and last up to six times the life of a conventional cut-end mop. The higher price of this mop is soon compensated by lower replacement and labor costs.



All Looped-End Mops are packed 1 dozen per case and come fanned with a matching tailband.

### LOOPED-END NARROW BAND

Description	Small	Medium	Large	X-Large
	Stock #	Stock #	Stock #	Stock #
<b>Pride Cotton 4-Ply</b>	1193	1194	1196	1197
<b>Duty Rayon 4-Ply</b>	1243	1244	1246	1247
<b>Raycot Natural 4-Ply</b>	1273	1274	1276	1277
<b>Raycot Colored 4-Ply</b>	1283	1284	1286	1287
<b>Blue/White Stripe</b>	1143	1144	1146	1147
<b>Ray/Syn Blend</b>	1173	1174	1176	1177
Shipping Weight/Dz.	10 lbs.	13 lbs.	18 lbs.	23 lbs.

*For colored Raycot: Add O-Orange, B-Blue, G-Green, R-Red to the end of the stock number.*

## SMOOTHIE NYLON FINISH MOP

100% nylon lint-free yarn. Great for laying floor finish!

Description	Small	Medium	Large	X-Large
	Stock #	Stock #	Stock #	Stock #
<b>Narrow Band</b>	1263	1264	1266	1267
<b>Wide Band</b>	2263	2264	2266	2267
Shipping Weight/Dz.	10 lbs.	13 lbs.	18 lbs.	23 lbs.



# LOOPED-END MOPS

## WIDE BAND

### LOOPED-END WIDE BAND

Wide band looped-end mops come with a standard mesh band. Vinyl coated mesh bands are available upon request. Wide Band Mops suggested mop handle is our jaws series: 7230, 7240, 7241.



Description	Small	Medium	Large	X-Large
	Stock #	Stock #	Stock #	Stock #
<b>Pride Cotton 4-Ply</b>	2193	2194	2196	2197
<b>Duty Rayon 4-Ply</b>	2243	2244	2246	2247
<b>Raycot Natural 4-Ply</b>	2273	2274	2276	2277
<b>Raycot Colored 4-Ply</b>	2283	2284	2286	2287
<b>Blue/White Stripe</b>	2143	2144	2146	2147
<b>Ray/Syn Blend</b>	2173	2174	2176	2177
Shipping Weight/Dz.	10 lbs.	13 lbs.	18 lbs.	23 lbs.

*For colored Raycot: Add O-Orange, B-Blue, G-Green, R-Red to the end of the stock number.*

### T-SHIRT MOP

Knitted polyester strands enable this mop to outlast conventional mops. The knitted yarn is designed to lower linting while enhancing water absorbency. This mop stands up to the toughest floor surfaces including brick, concrete and stone.



Description	Small	Medium	Large
	Stock #	Stock #	Stock #
<b>Narrow Band</b>	1333	1334	1335
<b>Wide Band</b>	2333	2334	2335

## CAROLINA MOP'S SIZEWIZE™ PACKAGED PRODUCTS

Carolina Mop's SizeWize™ packaging is now offered on some of our higher-volume products.

- 3 business day lead time
- Reduces warehouse footprint by reducing box size
- Saves space on delivery vehicles

*\*Private labeling of box only for SizeWize™ packaged products.*



### LOOPED-END WIDE BAND

Description	Item
Wide Band	Stock #
<b>Medium Green Blend</b>	2284-G-SW
<b>Large Green Blend</b>	2286-G-SW
<b>Medium Blue Blend</b>	2284-B-SW
<b>Large Blue Blend</b>	2286-B-SW

### CUT-END WIDE BAND

Description	Item
	Stock #
<b># 24 Cotton Cut-End</b>	7016-SW
<b># 32 Cotton Cut-End</b>	7017-SW

### LOOPED-END NARROW BAND

Description	Item
	Stock #
<b>Large Cotton Blend</b>	1196-SW
<b>Large Blue Blend</b>	FL280260-SW

### CUT-END NARROW BAND

Description	Item
Narrow Band	Stock #
<b>16 oz Cotton Cut-End</b>	1014-SW
<b>20 oz Cotton Cut-End</b>	1015-SW
<b>24 oz Cotton Cut-End</b>	1016-SW
<b># 24 Cotton Cut-End</b>	3016-SW
<b>32 oz Cotton Cut-End</b>	1017-SW



### SCREW CONNECTOR

Description	Item
Screw Connector	Stock #
<b>24 oz Cotton Cut-End</b>	5016-SW
<b># 20 Cotton Cut-End</b>	6015-SW
<b>24 oz Blue Blend Cut-End</b>	5106-B-SW

## CAROLINA MOP'S BLOCKMOP™ PACKAGED PRODUCTS

Carolina Mop's BlockMop™ packaging is now offered on some of our higher-volume products.

- Reduces warehouse footprint by reducing box size
- Saves space on delivery vehicles

*\*Private labeling of box only for BlockMop™ packaged products.*

### NARROW BAND WITH PRE-TWISTED ENDS

Description	Item
Narrow Band	Stock #
<b>Small Blue BlockMop™</b>	1163-B
<b>Medium Blue BlockMop™</b>	1164-B
<b>Large Blue BlockMop™</b>	1166-B
<b>Small Rayon BlockMop™</b>	1163
<b>Medium Rayon BlockMop™</b>	1164
<b>Large Rayon BlockMop™</b>	1166
<b>Small Cotton BlockMop™</b>	1163-C
<b>Medium Cotton BlockMop™</b>	1164-C
<b>Large Cotton BlockMop™</b>	1166-C





## CAROLINA V-STRIP™ MOP

More absorbent than standard rayon and cotton mops. Independent tests confirm that V-STRIP™ mop heads absorb more liquid with ½ the material of cotton and rayon mops.

### TOTAL MOP ABSORPTION TEST

A bucket was placed on a scale and then filled with 2500 grams of water. Each mop was submerged in the bucket for 10 seconds. Each mop was then held above the bucket and allowed to drain back into it for 10 seconds. After this amount of time, the weight of the water in the bucket was noted and a percentage of the water absorbed was calculated.

Sample	% Water Absorbed	Actual Grams of Water Absorbed
<b>6 oz. V-STRIP™</b>	53.4	1335g
<b>12 oz. Rayon</b>	51.8	1295g
<b>12 oz. Cotton</b>	37.3	932.50g
<b>8 oz. V-STRIP™</b>	68.1	1702.50g
<b>16 oz. Rayon</b>	60.8	1520g
<b>16 oz. Cotton</b>	45.3	1132.50g

Less Lint compared to standard rayon and cotton mops. Independent tests confirm that V-STRIP™ mop heads produce significantly less lint compared to cotton and rayon mops.

### THE LINT TEST

Using an Atlas Random Tumble Pilling Tester. 5 grams of each sample were weighed and placed into the test unit. The samples were turned over at high speed for 15 minutes. Lint that was collected from the chamber after 15 minutes was then weighed.

Sample	Time	Avg Grams
<b>Cotton</b>	53.4	.1240g
<b>Rayon</b>	51.8	.0669g
<b>V-STRIP™</b>	37.3	0g

Carolina V-STRIP™ Mop is 100% Post-Industrial Recycled Material, 100% made in the USA, and provides more floor coverage compared to cotton and rayon mops.

## CUT-END V-STRIP™ MOPS

Description	Size	Item
Cut-End		
<b>12 oz. Rayon and Cotton Equivalent</b>	Medium	1023V
<b>16 oz. Rayon and Cotton Equivalent</b>	Large	1024V
<b>24 oz. Rayon and Cotton Equivalent</b>	X-Large	1026V



## LOOP-END V-STRIP™ MOPS

Description	Size	Item
<b>12 oz. Rayon and Cotton Equivalent</b>	Medium	1023V-LE
<b>16 oz. Rayon and Cotton Equivalent</b>	Large	1024V-LE
<b>24 oz. Rayon and Cotton Equivalent</b>	X-Large	1026V-LE



## GREENTEX™ PRODUCTS

100% recycled yarn. This new yarn is made of 70% pure green PET (plastic bottle fibers) and 30% post consumer rayon/polyester.

### Yarn Performance:

- Absorbs over 5 times its weight
- Releases almost 40% upon wringing
- 90% dries after only the spin cycle of the washer and completely dries after 15 minutes
- Air dries 100% overnight



## GREENTEX™ WET MOPS

Description	Small	Medium	Large	X-Large
Narrow Band	Stock #	Stock #	Stock #	Stock #
<b>Narrow Band 4-Ply</b>	1993	1994	1996	1997
Shipping Weight/Dz.	10 lbs.	13 lbs.	18 lbs.	23 lbs.



Description	Small	Medium	Large	X-Large
Wide Band	Stock #	Stock #	Stock #	Stock #
<b>Wide Band 4-Ply</b>	2993	2994	2996	2997
Shipping Weight/Dz.	10 lbs.	13 lbs.	18 lbs.	23 lbs.



## GREENTEX™ DUST MOPS

Description	5" x 18"	5" x 24"	5" x 36"	5" x 48"
	Stock #	Stock #	Stock #	Stock #
<b>GreenTex™ Dust Mops</b>	9022	9023	9024	9025
Shipping Weight/Dz.	9 lbs.	11 lbs.	15 lbs.	19 lbs.

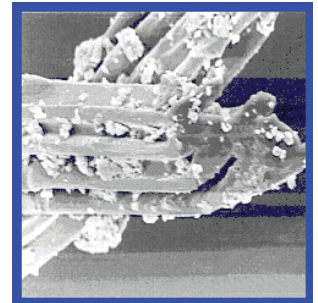


## MICROFIBER PRODUCTS

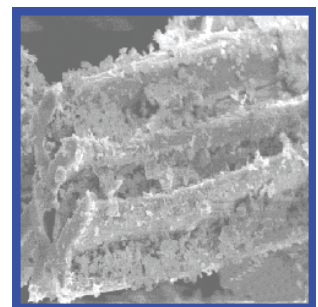
In the last few years, new technologies and systems improvements have been developed to provide for more efficient and productive ways of cleaning. It is interesting to note, however, that one of the basic daily activities undertaken in most hospitals dates back to the 19th century. The string mop was patented in 1893 and is still one of the most utilized floor cleaning tools today. While the string mop has seen its own advancements over the years, a new and improved alternative to the conventional string mop has recently emerged - microfiber flat mopping.

The flat mopping system was initially manufactured in Sweden in the 1990's and later in Korea and China. The system became very popular in Europe due to its innate ability to clean without the use of chemicals. The construction of the microfiber flat mop enables the fibers to attract dust, dirt, and bacteria, and hold the particles and pathogens within the mop until laundered. Once end users embraced this concept and began putting flat mops into practice, the implementation brought about a surge of benefits, including reduced costs, increased labor productivity, and ergonomic advantages, among others. More importantly, with the onslaught of community-acquired infections in hospitals, the microfiber flat mopping system has helped to dramatically reduce opportunities for cross-contamination.

In addition to improved cleaning and infection control, the microfiber flat mop system provides additional benefits compared to the conventional string mop. The microfiber flat mop system leaves less water residue on the floor, which reduces slip and fall injuries. The microfiber mop system weighs less than a wet string mop and is easier to move across the floor of a hospital room, resulting in less muscle soreness and pains felt by the end user. Additional ergonomic benefits are seen because the end user is no longer required to dump out several gallons of water from a bucket every three rooms, which is mandatory with a string mop system. Also, the flat mop system increases labor productivity by 20 percent with the elimination of frequent trips to the supply closet and the improved speed in the mopping process.



*Split Microfiber  
Cleaning Dirt*



*Split Microfiber  
Cleaning Dust*

## MICROFIBER DISPOSABLE PADS

Split microfiber for general purpose cleaning. Available in White. Prevent cross-contamination by using a new mop for every job.

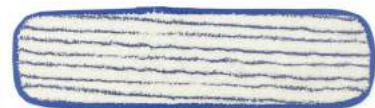
Description	5"x18"	5"x24"
	Stock #	Stock #
<b>Microfiber Disposable Pads</b>	3118DISP	3124DISP



## MICROFIBER FINISH PADS

Our microfiber finish pad is constructed with a 100% continuous filament synthetic microfiber yarn that provides for a lint-free smooth finish. There are many advantages to laying floor finish with this product as compared to traditional finish mops including less wasted finish, reduced fatigue, and more contained finishing for cleaner base boards.

Description	18"	24"
	Stock #	Stock #
<b>Microfiber Finish Pad</b>	Wax18	Wax24



# MICROFIBER PRODUCTS

## MICROFIBER FLAT MOP HARDWARE

Description	Stock #
Flat Mop Frame - 5" x 18"	908
Flat Mop Frame - 5" x 24"	908-24
40" to 70" Telescoping Handle	909



## MICROFIBER WET MOP

Split microfiber pad for wet mopping. This pad can be laundered hundreds of times. Available in Blue, Green, Red, and Yellow.

Description	5"x18"	5"x24"
	Stock #	Stock #
Microfiber Wet Mop	3118-W	3124-W

For colors add B-Blue, G-Green, Y-Yellow, and R-Red to the end of the stock number.



## TRADITIONAL MICROFIBER MOPS

Utilize the advantages of split microfiber without having to change handles, buckets, and retrain cleaning professionals. Traditional microfiber mopheads are available in narrow and wide band. Available in blue/yellow striped, white, and blue.

Description	Small	Medium	Large	X-Large
	Stock #	Stock #	Stock #	Stock #
Blue/Yellow Striped Narrow Band Loop-End	6083	6084	6086	6087
Blue/Yellow Striped Wide Band Loop-End	6023	6024	6026	6027
White Narrow Band Loop-End	6083-W	6084-W	6086-W	6087-W
Blue Narrow Band Loop-End	6083-B	6084-B	6086-B	6087-B
White Wide Band Loop-End	6023-W	6024-W	6026-W	6027-W
Blue Wide Band Loop-End	6023-B	6024-B	6026-B	6027-B



## TRADITIONAL MICROFIBER TUBE MOPS

Description	Medium	Large
	Stock #	Stock #
White Narrow Band Loop-End	6084TUBE	6086TUBE
White Wide Band Loop-End	6024TUBE	6026TUBE
Blue Narrow Band Loop-End	6084BTUBE	6086BTUBE
Blue Wide Band Loop-End	6024BTUBE	6026BTUBE
Green Narrow Band Loop-End	6084GTUBE	6086GTUBE
Green Wide Band Loop-End	6024GTUBE	6026GTUBE

## MICROFIBER TOWELS

100% microfiber durable cleaning towels are lightweight, highly absorbent and will pick up the toughest dust and dirt particles. Industrial laundering tests demonstrate that our durable cleaning towels can withstand over 100 wash cycles. Our durable cleaning towels are excellent for cleaning small surfaces such as countertops, sinks, bed rails, faucets, toilets and mirrors. Available in 16" x 16" and packaged 204 per case. Use our durable cleaning towels wet or dry, launder and reuse.



Description	Blue	Green	Yellow	Pink
Woven Towels 16" x 16"	993-B	993-G	993-Y	993-P

## MICROFIBER DRY MOP PADS

Split microfiber pad with fringe for dry mopping. This pad can be laundered hundreds of times.



Description	5" x 18"	5" x 24"
Microfiber Dry Mop Pads	3118-D	3124-D

## POCKET MICROFIBER MOPS & FRAME

Description	Stock #
18" Collapsible Frame for use with Pocket Microfiber Dust Mops	908-Pock
18" Pocket Microfiber Mop Head (White)	3118-Pock
18" Pocket Microfiber Mop Head (Blue)	3118-Pock Blue



## MICROFIBER CLEANING & DUSTING

Description	Stock #
28" Flexible Duster Wand	MFWAND
22" Flexible Microfiber Duster Sleeve	MFSLEEVE
Microfiber Car Wash Mitt	MFCARMITT
Microfiber Mitt with Thumb	MFMITT



## MICROFIBER BUCKET

This bucket is designed for use with our microfiber pads. Place up to 25 pads in this bucket with desired chemicals. Then simply remove pad and attach to frame for superior cleaning performance.

Description	Stock #
Microfiber Bucket	910



# LAUNDERABLE DUST MOP HEADS

## CUT-END

The Cut-End is our most popular dust mop. It is made from a blend of cotton and synthetic yarn with a polyester backing. Keyhole backing with snaps is standard.

Stock #	Size	Stock #	Size
9011	3.5" x 12"	9061	5" x 12"
9012	3.5" x 18"	9062	5" x 18"
9013	3.5" x 24"	9063	5" x 24"
9014	3.5" x 36"	9064	5" x 36"
9015	3.5" x 48"	9065	5" x 48"
9016	3.5" x 60"	9066	5" x 60"
9017	3.5" x 72"	9067	5" x 72"



## LOOPED-END

The Looped-End dust mop is made of fine strand yarn and stitched to a high grade, preshrunk blue synthetic material. Keyhole backing with snaps is standard. Maximum durability is offered.

Stock #	Size	Stock #	Size
9032	3.5" x 18"	9082	5" x 18"
9033	3.5" x 24"	9083	5" x 24"
9034	3.5" x 36"	9084	5" x 36"
9035	3.5" x 48"	9085	5" x 48"
9036	3.5" x 60"	9086	5" x 60"
9037	3.5" x 72"	9087	5" x 72"



## BLUE LOOPED-END

Blue blended yarn with blue keyhole backing and snap closures.



Stock #	Size
9082-B	5" x 18"
9083-B	5" x 24"
9084-B	5" x 36"
9085-B	5" x 48"
9086-B	5" x 60"



# DISPOSABLE DUST MOP HEADS & HARDWARE

## DISPOSABLE DUST MOP

Disposable dust mops are a good choice when economy is needed and laundering is not required. Pretreated, absorbent yarn and dust-traps provide for extra holding of dirt. Keyhole backing and tie closures are standard.



Stock #	Size	Stock #	Size
9212	3.5" x 18"	9262	5" x 18"
9213	3.5" x 24"	9263	5" x 24"
9214	3.5" x 36"	9264	5" x 36"
9215	3.5" x 48"	9265	5" x 48"
9216	3.5" x 60"	9266	5" x 60"

## 40' DISPOSABLE DUST MOP REFILL

Cut this 40 foot disposable to any size. The most economical dust mop available.

Description	Stock #
40' Disposable Dust Mop Refill	40DISP



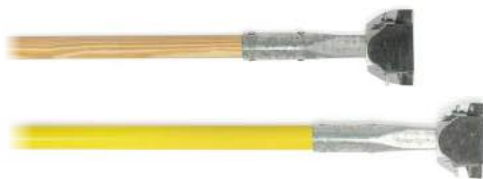
## DUST MOP FRAMES



Stock #	Size	Stock #	Size
9111	3.5" x 12"	9121	5" x 12"
9112	3.5" x 18"	9122	5" x 18"
9113	3.5" x 24"	9123	5" x 24"
9114	3.5" x 36"	9124	5" x 36"
9115	3.5" x 48"	9125	5" x 48"
9116	3.5" x 60"	9126	5" x 60"
9117	3.5" x 72"	9127	5" x 72"

## DUST MOP HANDLES

Quick change, snap-on dust mop handles with swivel or rigid positions.



Description	Size	Stock #
Clip-On, Wood Handle	15/16" x 60"	7250
Clip-On, Fiberglass Handle	15/16" x 60"	7510
Clip-On, Wood Handle	15/16" x 54"	7251

# DUST MOP HEADS

## ELECTROSTATIC

The Electrostatic is a high-quality dust mop that needs no chemical treatment. 100% heat set nylon attracts dust particles by movement across the floor. Ideal where there is a concern with the interaction of chemicals.

Stock #	Size	Stock #	Size
9042	3.5" x 18"	9052	5" x 18"
9043	3.5" x 24"	9053	5" x 24"
9044	3.5" x 36"	9054	5" x 36"
		9055	5" x 48"
		9056	5" x 60"



## WHITE NYLON DUST MOP

Lint-free Nylon flat mop for laying floor finish



Stock #	Size
9072	5" x 18"
9073	5" x 24"
9074	5" x 36"

## WALL WASH HEAD



Description	7"	9"
	Stock #	Stock #
Wall Wash Head	9308	9309

## POCKET MICROFIBER DUST MOP HEADS

Our most durable dust mop. Can be laundered hundreds of times.



Description	5" x 18"	5" x 24"	5" x 36"	5" x 48"	5" x 60"
	Stock #	Stock #	Stock #	Stock #	Stock #
Microfiber Dust Mop Pads	9082-MF	9083-MF	9084-MF	9085-MF	9086-MF

# DECK MOPS, SPONGE MOPS, WEDGE MOPS

## DECK MOPS

Deck Mops feature strong wire-bound construction that can stand up to heavy duty mopping jobs. A cushion of yarn is constructed at the end to prevent scratching floors. All deck mops can be twine-bound for correctional markets. Just add TB to the end of desired part number.

Sizes 8 oz. - 16 oz. Deck Mops are made with 7/8" x 48" handles.

Each mop is furnished with individual polyethylene sleeve.

Sizes 20 oz. - 32 oz. are furnished with 1 1/8" x 54" handles.

8 oz. - 16 oz.: packed 12/bundle.  
20 oz. - 32 oz.: packed 6/bundle.



Description	8 oz.	10 oz.	12 oz.	16 oz.	20 oz.	24 oz.	32 oz.
	Stock #	Stock #	Stock #	Stock #	Stock #	Stock #	Stock #
Pride Cotton 4 Ply	8011	8012	8013	8014	8015	8016	8017
Brute Cotton 8 Ply	8041	8042	8043	8044	8045	8046	8047
Duty Rayon 4 Ply	8061	8062	8063	8064	8065	8066	8067
Quicksorb Rayon 8 Ply	8071	8072	8073	8074	8075	8076	8077
Cal/Jan Cotton 8 Ply	8081	8082	8083	8084	8085	8086	8087
Raycot Natural 4 Ply	8091	8092	8093	8094	8095	8096	8097
Raycot Colored 4 Ply	8101	8102	8103	8104	8105	8106	8107
Shipping Weight/Dz.	13 lbs.	14.5 lbs.	16 lbs.	19 lbs.	24 lbs.	28 lbs.	33 lbs.

For colored Raycot: Add O-Orange, B-Blue, R-Red, G-Green to the end of the stock number.  
For numbered deck mops: change 2nd digit to "2." Example: 8211

## SPONGE MOP

Description	Stock #	Shipping Wt
Metal Sponge Mop (6 pk.)	7390	10 lbs.
Metal Sponge Mop Refills (12 pk.)	7400	3 lbs.
Plastic Sponge Mop (6 pk.)	7391	10 lbs.
Plastic Sponge Mop Refills (12 pk.)	7401	3 lbs.



## WEDGE MOP & FRAME

Description	Stock #	Shipping Wt
Wedge Mop	9300	5 lbs.
Frame & Handle	9301	8 lbs.
Assembled Frame/Handle/Head	9304	13 lbs.



# MOP HANDLES

## SPRING MOPSTICK

Description	Stock #	Shipping Wt./Dz.
48" Household Spring Mopstick, Wood Handle	7010	11 lbs.
54" Janitor Spring Mopstick, Wood Handle	7020	17 lbs



## METAL STIRRUP MOPSTICK

Description	Stock #	Shipping Wt./Dz.
54" Junior Stirrup Mopstick, Wood Handle	7030	17 lbs.
60" Janitor Stirrup Mopstick, Wood Handle	7050	27 lbs.
60" Janitor Stirrup Mopstick, Fiberglass Handle	7060	27 lbs.



## SCREW CONNECTOR MOPSTICK

Description	Stock #	Shipping Wt./Dz.
54" Screw Connector, Wood Handle	7070	12 lbs.
60" Screw Connector, Wood Handle	7090	17 lbs.



## METAL QUICK CHANGE MOPSTICK

Description	Stock #	Shipping Wt./Dz.
54" Junior Quick Change, Wood Handle	7110	17 lbs.
60" Janitor Quick Change, Wood Handle	7130	27 lbs.
60" Janitor Quick Change, Fiberglass Handle	7140	27 lbs.



## METAL JAWS MOPSTICK

Description	Stock #	Shipping Wt./Dz.
54" Metal Jaws Clamp Wood Handle	7150	24 lbs.
60" Janitor Jaws Clamp, Wood Handle	7160	29 lbs.



## WET GRIP MOPSTICK

Description	Stock #	Shipping Wt./Dz.
60" Wet Grip, Wood Handle	7190	28 lbs.
60" Wet Grip, Fiberglass Handle	7200	28 lbs.



## PLASTIC MOP HARDWARE

### JANITOR POLY QUICK CHANGE MOPSTICK

Description	Stock #	Shipping Wt./Dz.
60" Janitor Poly Quick Change, Wood Handle	7210	21 lbs.
60" Janitor Poly Quick Change, Fiberglass Handle	7220	21 lbs.
60" Janitor Poly Quick Change, Metal Handle	7221	21 lbs.



### JANITOR POLY JAWS MOPSTICK

Description	Stock #	Shipping Wt./Dz.
60" Janitor Poly Jaws, Wood Handle	7230	21 lbs.
60" Janitor Poly Jaws, Fiberglass Handle	7240	21 lbs.
60" Janitor Poly Jaws, Metal Handle	7241	21 lbs.



### JANITOR POLY STIRRUP MOPSTICK

Description	Stock #	Shipping Wt./Dz.
60" Janitor Poly Stirrup, Wood Handle	7224	21 lbs.
60" Janitor Poly Stirrup, Fiberglass Handle	7225	21 lbs.
60" Janitor Poly Poly Stirrup, Metal Handle	7226	21 lbs.



### EZ CHANGE MOPSTICK

Description	Stock #	Shipping Wt./Dz.
60" EZ Change, Wood Handle	7222	21 lbs.
60" EZ Change, Fiberglass Handle	7227	21 lbs.
60" EZ Change, Metal Handle	7228	21 lbs.



## THREADED AND TAPERED HANDLES

### METAL THREADED WOOD HANDLES

Description	Stock #	Shipping Wt./Dz.
15/16" x 54" Lacquered Wood Handle	7260	11 lbs.
15/16" x 60" Lacquered Wood Handle	7270	13 lbs.
15/16" x 72" Lacquered Wood Handle	7280	15 lbs.
1-1/8" x 54" Lacquered Wood Handle	7201	14 lbs.
1-1/8" x 60" Lacquered Wood Handle	7202	16 lbs.



### WOOD THREADED WOOD HANDLES

Description	Stock #	Shipping Wt./Dz.
15/16" x 48" Lacquered Wood Handle	7300	9 lbs.
15/16" x 54" Lacquered Wood Handle	7310	10 lbs.
15/16" x 60" Lacquered Wood Handle	7320	12 lbs.
15/16" x 72" Lacquered Wood Handle	7330	14 lbs.
1-1/8" x 54" Lacquered Wood Handle	7291	14 lbs.
1-1/8" x 60" Lacquered Wood Handle	7290	16 lbs.



### WOOD TAPERED WOOD HANDLES

Description	Stock #	Shipping Wt./Dz.
15/16" x 48" Lacquered Wood Handle	7350	9 lbs.
15/16" x 54" Lacquered Wood Handle	7360	10 lbs.
15/16" x 60" Lacquered Wood Handle	7370	12 lbs.
15/16" x 72" Lacquered Wood Handle	7380	14 lbs.
1-1/8" x 54" Lacquered Wood Handle	7341	14 lbs.
1-1/8" x 60" Lacquered Wood Handle	7340	16 lbs.



### PLASTIC THREADED FIBERGLASS HANDLE

Description	Stock #	Shipping Wt./Dz.
1" x 60" Fiberglass Threaded Handle	7255	12 lbs.

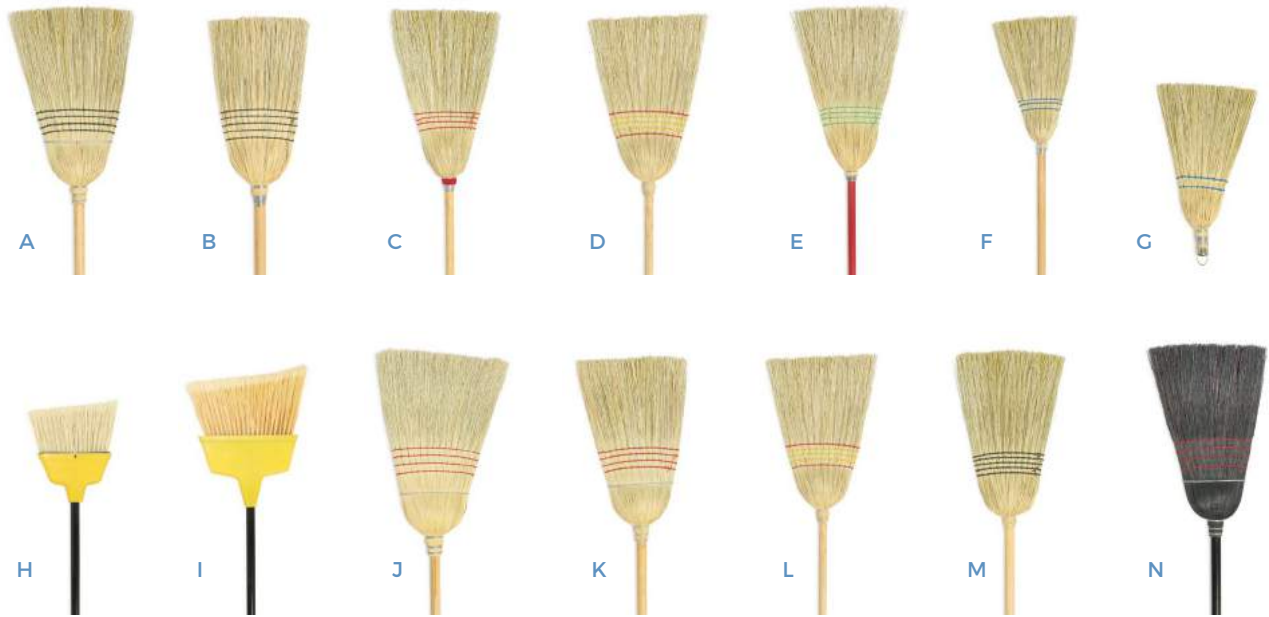


### METAL THREADED METAL HANDLE

Description	Stock #	Shipping Wt./Dz.
1" x 60" Metal Threaded Metal Handle	3270	13 lbs.







Description	Type	Stock #	Wt./Dz.
<b>A</b> 4-Sew with Band, Corn/Sotol 1-1/8" Lacquer Handle	Warehouse	7490	32 lbs.
<b>B</b> 5-Sew, Corn/Sotol 1-1/8" Lacquer Handle	Janitor	7440	30 lbs
<b>C</b> 4-Sew with Cloth, Corn/Sotol, Lacquer Handle	Little Jewell	7450	21 lbs.
<b>D</b> 5-Sew, Corn/Sotol, Lacquer Handle	Clean Sweep	7430	22 lbs.
<b>E</b> 4-Sew, Corn/Sotol, Red Handle	Red Bird	7480	20 lbs
<b>F</b> 3-Sew, Corn/Sotol, 30" Handle	Lobby	7460	8 lbs.
3-Sew, Corn/Sotol, 24" Handle	Toy	7461	8 lbs.
<b>G</b> 2-Sew, 8" Sweep, Corn/Sotol	Whisk	7500	5 lbs.
<b>H</b> Small Plastic Bristle	Angle, Small	7410	12 lbs.
<b>I</b> Large Plastic Bristle	Angle, Large	7420	16 lbs.
<b>J</b> 4-Sew with Band, 100% Corn, 1-1/8" Lacquer Handle	Warehouse	7494	18 lbs., 6 pk.
<b>K</b> 4-Sew with Band, Corn/Sotol, 1-1/8" Lacquer Handle	Warehouse	7493	18 lbs., 6 pk.
<b>L</b> 5-Sew Twine Bound, Corn/Sotol, Lacquer Handle	Household	7430-TB	22 lbs.
<b>M</b> 4-Sew Twine Bound, Corn/Sotol, 1-1/8" Lacquer Handle	Janitor	7440-TB	30 lbs.
<b>N</b> 4-Sew with Band, Black Corn/Sotol, 1-1/8" Black Lacquer Handle	Warehouse	7490-B	32 lbs.

**Brooms can be made to your specifications. Call for a quote.**

Bundled per dozen in broom bags.  
Cartons are also available upon request.

## FLOOR BRUSHES

### FLAGGED GREY POLYPROPYLENE

For fine sweeping. Wood block is 2-7/8" wide and 7/8" thick. Trim 3".

Description	Stock #	Packaged
18" Flagged Grey Polypropylene	7818	12
24" Flagged Grey Polypropylene	7824	12
36" Flagged Grey Polypropylene	7836	6



### BLACK TAMPICO

For medium sweeping. Wood block is 2-7/8" wide and 7/8" thick. Trim 3".

Description	Stock #	Packaged
18" Black Tampico	7718	12
24" Black Tampico	7724	12
36" Black Tampico	7736	6



### BLACK POLYPROPYLENE

For medium sweeping. Wood block is 2-7/8" wide and 7/8" thick. Trim 3".

Description	Stock #	Packaged
18" Black Polypropylene	7918	12
24" Black Polypropylene	7924	12
36" Black Polypropylene	7936	6



### PALMYRA

For heavysweeping. Wood block is 2-7/8" wide and 7/8" thick. Trim 3-1/4".

Description	Stock #	Packaged
18" Palmyra	7618	12
24" Palmyra	7624	12
36" Palmyra	7636	6



### BROOM BRACE

Description	Stock #	Packaged
Metal Brace for Brooms	300B	12



\*A 15/16" x 60" metal threaded handle is recommended for use with brushes. Item# 7270 can be found on p. 20 of the catalog.

\*Large broom brace recommended

**UTILITY / POT SCRUBBERS**

Foam plastic blocks available in 8" and 20" overall lengths. Brush face is 5-1/2" x 5". Trim 2".

Description	Stock #	Packaged
8" White Tampico	0108	12
20" White Tampico	0120	12
8" Plastic Fill	0208	12
20" Plastic Fill	0220	12
8" Nylon Fill	0708	12
20" Nylon Fill	0720	12



**DECK SCRUB BRUSHES**

**WOOD BLOCK**

10" long x 2-7/8" wide. One threaded and one tapered handle hole. Trim 2".

Description	Stock #	Packaged
10" White Tampico	410T	12
10" Plastic Fiber	410PL	12
10" Palmyra	410P	12



**DUAL SURFACE**

Foam plastic block is 10" long. One threaded handle hole.

Description	Stock #	Packaged
10" Crimped Plastic	410CP	12



**COUNTER BRUSHES**

**FLAGGED GREY PLASTIC**

For fine dusting. Foam plastic block is 13" long with an 8" brush face. Trim 2-1/2".

Description	Stock #	Packaged
13" Flagged Grey Plastic	50108	12



**BLACK TAMPICO**

For medium dusting. Foam plastic block is 13" long with an 8" brush face. Trim 2-1/2".

Description	Stock #	Packaged
13" Black Tampico	50208	12



## HAND BRUSHES

Description	Stock #	Packaged
6" Plastic Handle/ Plastic Bristle	310106	12
Yellow Crimped Plastic Hand Scrub Brush	HSB8	12



## BOWL BRUSHES

### PLASTIC HANDLE / PLASTIC BRISTLE

Twisted on wire looped end head, 6" x 4/12". 12" plastic handle.

Description	Stock #	Packaged
6" Plastic Handle / Plastic Bristle	7112	48



### EURO STYLE / PLASTIC BRISTLE

Plastic bristle staple set in an 11" long handle. Brush head has a 3-3/4" diameter.

Description	Stock #	Packaged
11" Euro Style / Plastic Bristle	7113	24
11" Euro Style / Plastic Bristle Holder	7113-H	24



Description	Stock #	Packaged
Bowl Mop - Synthetic Fiber, 12" Long Plastic Handle	7111	100
Bowl Mop with Cone	7114	12
Toilet Rim Brush with Caddy	7115	12



## MISCELLANEOUS BRUSHES

Description	Stock #	Packaged
Brush Fryer Straight	5204	12
L-Shape Fryer Brush	5205	12
10" Hi Lo Brush	2310	12
Food Grade 8.5" Short Handle Gong	3201	12
Dish and Sink Brush	3109	12
8.5" Palmyra Gong	2004	12



## 18" AND 24" POLY FLOOR BROOMS

Description	Stock #
18" Poly Floor Broom Plastic Block - Blue	7918-B
18" Poly Floor Broom Plastic Block - Green	7918-G
18" Poly Floor Broom Plastic Block- Red	7918-R
18" Poly Floor Broom Plastic Block- Yellow	7918-Y
24" Poly Floor Broom Plastic Block - Blue	7924-B
24" Poly Floor Broom Plastic Block - Green	7924-G
24" Poly Floor Broom Plastic Block - Red	7924-R
24" Poly Floor Broom Plastic Block - Yellow	7924-Y



## 9" MULTI-ANGLE BROOMS

Description	Stock #
9" Multi-Angle Broom - Blue	7490-609-B
9" Multi-Angle Broom - Green	7490-609-G
9" Multi-Angle Broom - Red	7490-609-R
9" Multi-Angle Broom - Yellow	7490-609-Y



## 18" AND 24" MOSS SQUEEGEES

Description	Stock #
18" Moss Squeegee - Blue	18SS-B
18" Moss Squeegee - Green	18SS-G
18" Moss Squeegee - Red	18SS-R
18" Moss Squeegee - Yellow	18SS-Y
24" Moss Squeegee - Blue	24SS-B
24" Moss Squeegee - Green	24SS-G
24" Moss Squeegee - Red	24SS-R
24" Moss Squeegee - Yellow	24SS-Y



Handles for color coded items sold separately.

# COLOR CODED ITEMS

## 48" METAL HANDLES

Description	Stock #
48" Metal Handles - Blue	7420-B-H
48" Metal Handles - Green	7420-G-H
48" Metal Handles - Red	7420-R-H
48" Metal Handles - Yellow	7420-Y-H



## BLUE FIBERGLASS HANDLES

Description	Stock #	Shipping Wt./Dz.
60" Janitor Poly Jaws	7240-B	21 lbs.
60" Janitor Poly Quick Change	7220-B	21 lbs.
60" Janitor Quick Change	7140-B	27 lbs.
60" Janitor Stirrup Mopstick	7060-B	27 lbs.



## RED FIBERGLASS HANDLES

Description	Stock #	Shipping Wt./Dz.
60" Janitor Poly Jaws	7240-R	21 lbs.
60" Janitor Poly Quick Change	7220-R	21 lbs.
60" Janitor Quick Change	7140-R	27 lbs.
60" Janitor Stirrup Mopstick	7060-R	27 lbs.





## CARPET BONNETS

### GREEN WHITE STRIPED BONNETS

Green/white striped bonnets. Looped construction with green scrubbing strips on both sides.

Description	Stock #	Packaged
17" Green/White Striped Bonnet	C-17	6
19" Green/White Striped Bonnet	C-19	6
21" Green/White Striped Bonnet	C-21	6



### COTTON BLEND BONNETS

White bleached long loop pile.

Description	Stock #	Packaged
17" Cotton Bonnet	B-17	6
19" Cotton Bonnet	B-19	6
21" Cotton Bonnet	B-21	6



### MICROFIBER BONNETS WITH SCRUB STRIP

Microfiber bonnets reduce the demand for water and chemicals. These bonnets are launderable, but bleach and fabric softener should not be used.

Description	Stock #	Packaged
17" Microfiber Bonnet	M-17	6
19" Microfiber Bonnet	M-19	6
21" Microfiber Bonnet	M-21	6



### LAUNDRY NET

White mesh laundry net. Helps reduce tangling when laundering mops.

Description	Stock #
24" x 36" Laundry Net	0906



# MISCELLANEOUS PRODUCTS/TOOLS

## MOP BUCKETS

Description	Stock #
36 Qt. Mop Bucket with Sidepress Wringer	0901
36 Qt. Mop Bucket with Downpress Wringer	0901-DP
36 Qt. Metal Free Prison Bucket	0901-PR
26 Qt. Mop Bucket with Sidepress Wringer	0901-26
42 Qt. Mop Bucket with Water Divider and Wringer	0901-DL



0901

0901-DL

## LOBBY DUST PAN

Black plastic pan with ergonomically styled handle.  
Comes with an integrated clip for attaching a lobby upright broom.

Description	Stock #
Lobby Dust Pan (6 Pack)	0902



## WET FLOOR SIGNS

Description	Stock #
Wet Floor Sign (6 Pack)	0903
Tower Wet Floor Cone (6 Pack)	0904



## JANITOR CAST CART

Description	Stock #
Janitor Cast Cart (Each)	0905



# MISCELLANEOUS PRODUCTS/TOOLS

## SPRAY BOTTLE

Description	Stock #
Trigger Sprayer with 9-1/4" tube	TRS9
32 oz. Bottle with Gradations	BT32



## DUST PAN

Description	Stock #
12" Wide Black Plastic Dust Pan	DP12



## 44 GALLON TRASH CAN

Description	Stock #
Flat Trash Can Lid	TCFL
44 Gallon Trash Can	TC44
Trash Can Caddy Bag	TCCB
Trash Can Dolly	TCDL



## MAID'S CADDY

Description	Stock #
Maid's Caddy with Handle	907M



## WALL MOUNTED TOOL HOLDER

Designed to hold brooms and handles. Mounting hardware included.

Description	Stock #
Wall Mounted 3 Position Tool Holder	WH03

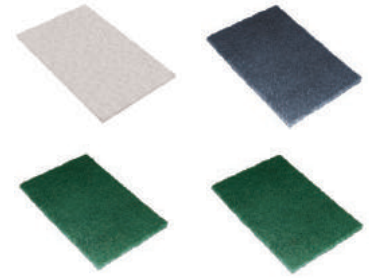


20 Case Minimum for Pads

## HAND PADS

6" x 9" Hand Pads. Packaged in 3 bags of 20 for a total of 60 pads per case.

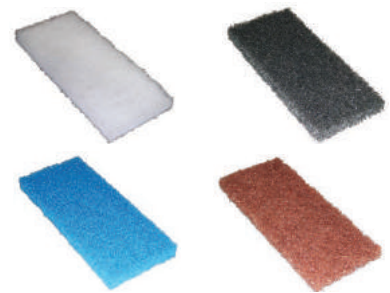
Description	Stock #
White - 6" x 9" Light Duty Hand Pad	HP9W
Green - 6" x 9" Medium Duty Hand Pad	HP9GMD
Black - 6" x 9" Heavy Duty Hand Pad	HP9BHD
Green - 6" x 9" X-Heavy Duty Hand Pad	HP9GXHD



## UTILITY PADS

4.5" x 10" Utility Pads. Designed to be used with utility pad holder.  
Packaged in 4 bags of 5 for a total of 20 pads per case.

Description	Stock #
White - 4.5" x 10" Light Duty Utility Pad	410WHT
Blue - 4.5" x 10" Medium Duty Utility Pad	410BLU
Brown - 4.5" x 10" Heavy Duty Utility Pad	410BRW
Black - 4.5" x 10" X-Heavy Duty Utility Pad	410BLK



## FLOOR PADS

### COMBO BURNISHING FLOOR PAD

Light hogs hair blended with polyester and natural fibers for an extra high gloss when buffing or burnishing with an ultra high speed machine. Use dry or with spray buff solution.

Size	Stock #
13"	FP13COM
14"	FP14COM
16"	FP16COM
17"	FP17COM
18"	FP18COM
19"	FP19COM
20"	FP20COM
24"	FP24COM
27"	FP27COM



### AGGRESSIVE HOGS HAIR BURNISHING FLOOR PAD

For thermal buffing and burnishing.  
Natural fiber blend designed for use on hard finishes.

Size	Stock #
13"	FP13HOG
14"	FP14HOG
16"	FP16HOG
17"	FP17HOG
18"	FP18HOG
19"	FP19HOG
20"	FP20HOG
24"	FP24HOG
27"	FP27HOG



20 Case Minimum for Pads

### FLOOR PADS

#### AQUA BURNISHING FLOOR PAD

Ideal for frequent burnishing. Recommended for soft to medium floor finishes.

Size	Stock #
13"	FP13AQU
14"	FP14AQU
16"	FP16AQU
17"	FP17AQU
18"	FP18AQU
19"	FP19AQU
20"	FP20AQU
24"	FP24AQU
27"	FP27AQU



#### GREEN SCRUB FLOOR PAD

For heavy duty scrubbing or light stripping. Removes dirt and scuff marks prior to re-coating.

Size	Stock #
13"	FP13GRN
14"	FP14GRN
16"	FP16GRN
17"	FP17GRN
18"	FP18GRN
19"	FP19GRN
20"	FP20GRN
24"	FP24GRN
27"	FP27GRN



#### RED BUFFING FLOOR PAD

For light cleaning and buffing. Removes light scuff marks and dirt while producing a high gloss shine.

Size	Stock #
13"	FP13RED
14"	FP14RED
16"	FP16RED
17"	FP17RED
18"	FP18RED
19"	FP19RED
20"	FP20RED
24"	FP24RED
27"	FP27RED



#### WHITE POLISHING FLOOR PAD

Extra fine pad for polishing dry floors. Use to buff soft finishes and low traffic areas. Ideal for marble floors.

Size	Stock #
13"	FP13WHT
14"	FP14WHT
16"	FP16WHT
17"	FP17WHT
18"	FP18WHT
19"	FP19WHT
20"	FP20WHT
24"	FP24WHT
27"	FP27WHT



20 Case Minimum for Pads

## BLUE CLEANER FLOOR PAD

For routine scrubbing. Removes dirt and scuff marks from heavily soiled floors prior to re-coating.

Size	Stock #
13"	FP13BLU
14"	FP14BLU
16"	FP16BLU
17"	FP17BLU
18"	FP18BLU
19"	FP19BLU
20"	FP20BLU
24"	FP24BLU
27"	FP27BLU



## BLACK STRIPPING FLOOR PAD

Removes dirt and old finish build-up. Cleans down to original surface. Also available in brown. Change last three digits to BRW. Brown pads are the same price as black.

Size	Stock #
13"	FP13BLK
14"	FP14BLK
16"	FP16BLK
17"	FP17BLK
18"	FP18BLK
19"	FP19BLK
20"	FP20BLK
24"	FP24BLK
27"	FP27BLK



## UTILITY PAD HOLDERS

Description	Stock #
Utility Pad Holder with lock on grip for tapered handles	410LOCK
Utility Pad Holder with threaded grip for threaded handles	410THRD



## SQUEEGEES

Cast aluminum shell with synthetic rubber blade. Economical general maintenance squeegee.

### STRAIGHT BLADE SQUEEGEE

Description	Stock #	Shipping Wt./Dz.
18" Straight Blade (6 pk.)	0018	9.5 lbs.
24" Straight Blade (6 pk.)	0024	11.5 lbs.
36" Straight Blade (6 pk.)	0036	15 lbs.



### CURVED BLADE SQUEEGEE

Description	Stock #	Shipping Wt./Dz.
18" Curved Blade (6 pk.)	0118	9.5 lbs.
24" Curved Blade (6 pk.)	0124	11.5 lbs.
36" Curved Blade (6 pk.)	0136	15 lbs.





## SQUEEGEES

Cast aluminum shell with non-marking gray FPDM synthetic blade.  
Heavy duty blade that will eliminate scuffing of floors.

### STRAIGHT BLADE SQUEEGEE

Description	Stock #	Shipping Wt./Dz.
18" Straight Blade (6 pk.)	0418	10.5 lbs.
24" Straight Blade (6 pk.)	0424	13 lbs.
36" Straight Blade (6 pk.)	0436	18.5 lbs.



### CURVED BLADE SQUEEGEE

Description	Stock #	Shipping Wt./Dz.
18" Curved Blade (6 pk.)	0518	10.5 lbs.
24" Curved Blade (6 pk.)	0524	13 lbs.
36" Curved Blade (6 pk.)	0536	18.5 lbs.



### BLACK FOAM MOSS

Description	Stock #	Shipping Wt./Dz.
22" Black Foam Moss (10 pk.)	22 MOSS	14 lbs.
30" Black Foam Moss (10 pk.)	30 MOSS	15 lbs.



### PLASTIC MOSS SQUEEGEE

Description	Stock #	Shipping Wt./Dz.
18" Plastic Moss Squeegee (10 pk.)	18SS	10 lbs.
22" Plastic Moss Squeegee (10 pk.)	22SS	14 lbs.



### PLASTIC WINDOW SQUEEGEE

Description	Stock #	Shipping Wt./Dz.
12" Plastic Window Squeegee (10 pk.)	12PS	5 lbs.
14" Plastic Window Squeegee (10 pk.)	14PS	6 lbs.



## RETAIL DISPLAYS

Carolina Mop has produced high quality products for home use since 1945. Through the years our commitment to ergonomic and high quality items you can use to clean your home has never waived. Select from five different retail displays designed to offer your customers the most popular cleaning tools needed for home use. Grocery stores, hardware stores, and Jan San Distributors have all seen positive retail sales by providing displays produced by Carolina Mop.

Description	Stock #	Quantity
Large Angle Broom & Dust Pan Combo	7420-DP12	Pack 21/ Display
Non-Woven Mop Head & Handle	1023P	Pack 21/ Display
Microfiber Mop Combo	912	Pack 21/ Display
Cotton Mop Head & Handle	8811	Pack 21/ Display
Household Corn Broom	7470	Pack 14/ Display

*All retail displays ship 4 displays per pallet.*



MANUFACTURING EXCELLENCE  
SINCE 1945

Much has changed through the years since our beginnings in 1945. However, we still feel the American worker adds value and quality to the products we produce at Carolina Mop, Inc. We look forward to serving you now and in the future.



[carolinamop.com](http://carolinamop.com)